

## PVC COATED SEALING FITTING

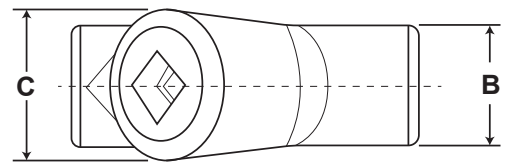
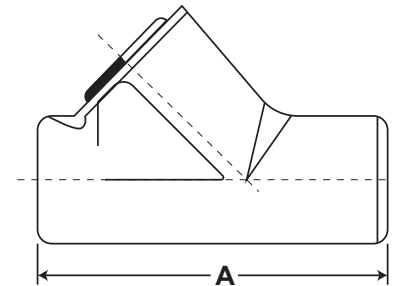
### Features:

- 40 mil PVC coating bonded to exterior.
- 2 mil grey urethane coating on interior.
- Sealing sleeves on all conduit openings.

- NEC/CEC:  
Class I, Division 1 & 2, Groups C, D.  
Class II, Division 1, Groups E, F, G.  
Class III, Division 1 & 2.

### EYS SERIES SEALING FITTING

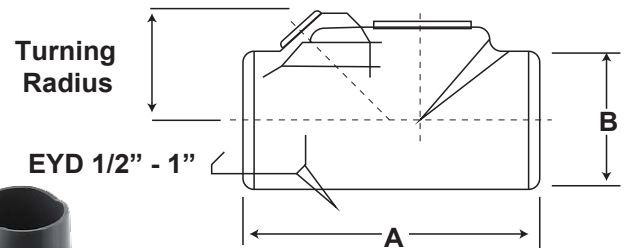
Cat.#		Trade Size	DIMENSION		TURNING RADIUS
FEMALE	MALE & FEMALE		A	B	
EYS1P	EYS16P	1/2"	3.31	1.25	1.66
EYS2P	EYS26P	3/4"	3.65	1.50	1.96
EYS3P	EYS36P	1"	4.25	1.75	2.40
EYS3P	EYS36P	1"	-	-	-
EYS11P	EYS116P	1/2"	3.63	1.25	1.09
EYS21P	EYS216P	3/4"	3.66	1.50	1.25
EYS31P	EYS316P	1"	4.25	1.75	1.59
EYS4P	EYS46P	1 1/4"	5.00	2.25	1.81
EYS5P	EYS56P	1 1/2"	5.44	2.44	2.00
EYS6P	EYS66P	2"	6.25	3.00	2.31
EYS7P	EYS76P	2 1/2"	7.50	3.50	2.56
EYS8P	EYS86P	3"	8.50	4.25	3.09
EYS9P	EYS96P	3 1/2"	9.19	4.75	3.38
EYS10P	EYS106P	4"	9.75	5.25	3.53



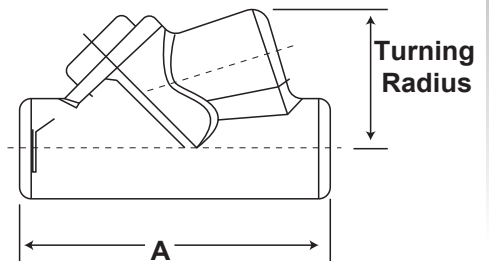
EYS1 - EYS5

### EYD SERIES DRAIN SEALING FITTING

Cat.#		Trade Size	DIMENSION		TURNING RADIUS
FEMALE	MALE & FEMALE		A	B	
EYD1P	EYD16P	1/2"	3.81	1.50	1.75
EYD2P	EYD26P	3/4"	4.08	1.75	1.98
EYD3P	EYD36P	1"	4.85	2.19	2.19
EYD4P	EYD46P	1 1/4"	5.00	2.25	1.80
EYD5P	EYD56P	1 1/2"	5.44	2.44	2.00
EYD6P	EYD66P	2"	6.25	3.00	2.32
EYD7P	EYD76P	2 1/2"	7.50	3.50	2.69
EYD8P	EYD86P	3"	8.50	4.25	3.15
EYD9P	EYD96P	3 1/2"	9.19	4.75	3.38
EYD10P	EYD106P	4"	9.75	5.25	3.64



EYD 1/2" - 1"



EYD 1 1/4" - 4"